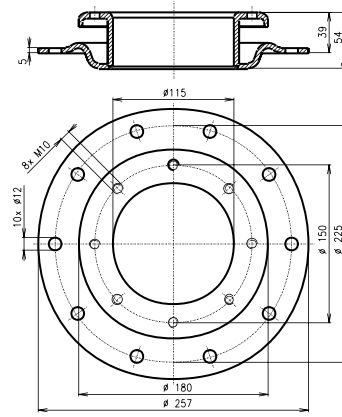


# ACCESSORIES

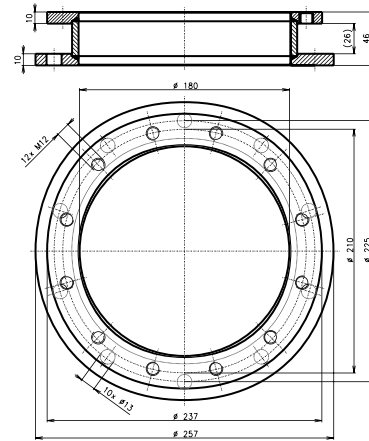
## Crossover flange 225/150

Electric heating units REU, RDU, RDW, RSW or exchanger RWT 1-110 D can be used for water heaters with volumes of 750 and 100 litres only with crossover flange 225/150.



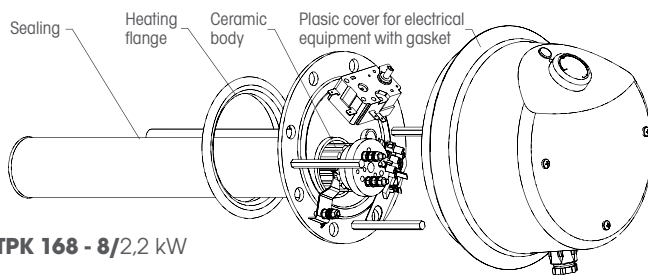
## Crossover flange 225/210

Electric heating units TPK 210-12/2,2 kW a TPK 210-12/3-6 kW can be used for water heaters with volumes of 750 and 100 litres only with crossover flange 225/210.

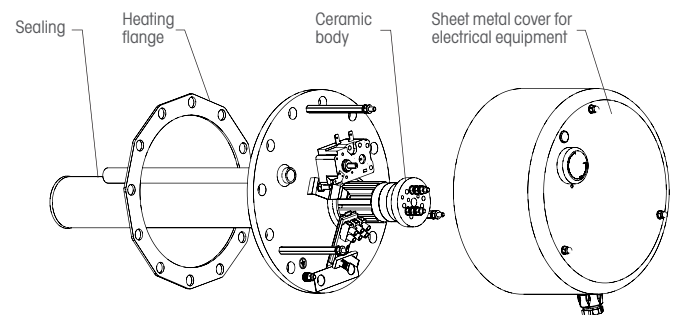


## Built-in electric heating unit for flange series -

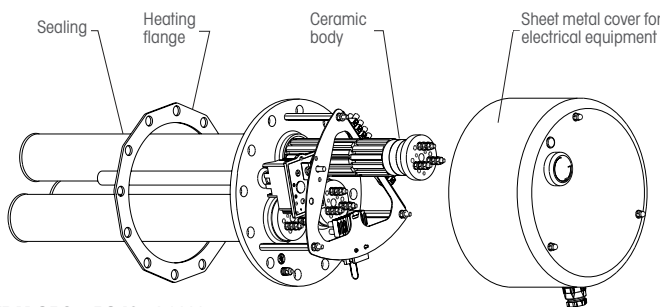
**TPK 168 - 8/2,2 kW**  
**TPK 210 - 12/2,2 kW**  
**TPK 210 - 12/3-6 kW**



**TPK 168 - 8/2,2 kW**



**TPK 210 - 12/2,2 kW**



**TPK 210 - 12/3-6 kW**

Type	Output (kW)	Voltage (V/Hz)	Unit length (mm)	Electrical protection	Weight (kg)	Mounting
<b>TPK 168 - 8/2,2 kW</b>	2.2	1 PE-N 230/50	410	IP 44	5	8x M10
<b>TPK 210 - 12/2,2 kW</b>	2.2	1 PE-N 230/50	450	IP 44	9	12x M12
<b>TPK 210 - 12/3-6 kW</b>	3-4-6	3 PE-N 400/50	450	IP 44	15	12x M12