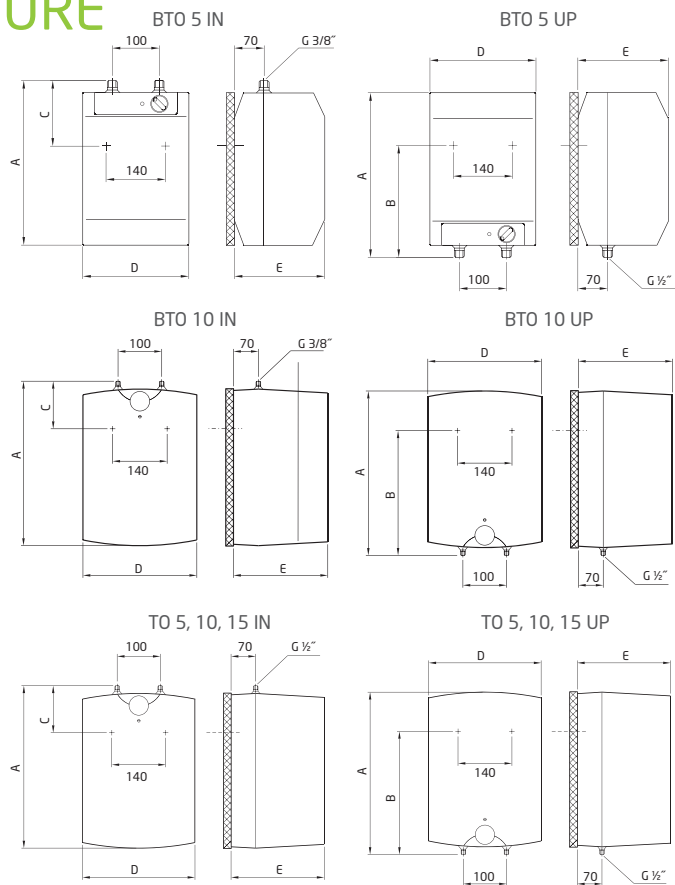


ELECTRIC STORAGE WATER HEATERS NON-PRESSURE/PRESSURE

Wall-mounted, electric
located under the consumption point -IN
located above the consumption point -UP



Type	A	B	C	D	E
BTO 5 UP	390	264	-	256	213
BTO 5 IN	390	-	138	256	213
BTO 10 UP	500	398	-	350	265
BTO 10 IN	500	-	122	350	265
TO 5 UP	500	398	-	350	265
TO 5 IN	500	-	122	350	265
TO 10 UP	500	398	-	350	265
TO 10 IN	500	-	122	350	265
TO 15 UP	500	398	-	350	310
TO 15 IN	500	-	122	350	310

Type	BTO 5 UP/IN	BTO 10 UP/IN	TO 5 UP/IN	TO 10 UP/IN	TO 15 UP/IN
Volume [l]	5	10	5	10	15
Connected load [kW]	2	2	2	2	2
Nominal overpressure [MPa]	0	0	0.6	0.6	0.6
Heating period with ele. en. from 10 °C to 60 °C [min]	9	18	9	18	27
Height x width x depth [mm]	390x256x213	500x350x265	500x350x265	500x350x265	500x350x310
Weight [kg]	3.5	4	7	8	11
Vessel	plast	plast	smaltovaná ocel	smaltovaná ocel	smaltovaná ocel
Electrical protection	IP 24	IP 24	IP 24	IP 24	IP 24
Voltage [V/Hz]	1 PE-N~230/50	1 PE-N~230/50	1 PE-N~230/50	1 PE-N~230/50	1 PE-N~230/50
Heat loss [kWh/24h]/energy efficiency class	0.32/G	0.4/G	0.25/G	0.33/G	0.4/G

BTO 5 UP/IN
BTO 10 UP/IN
TO 5 UP/IN
TO 10 UP/IN
TO 15 UP/IN



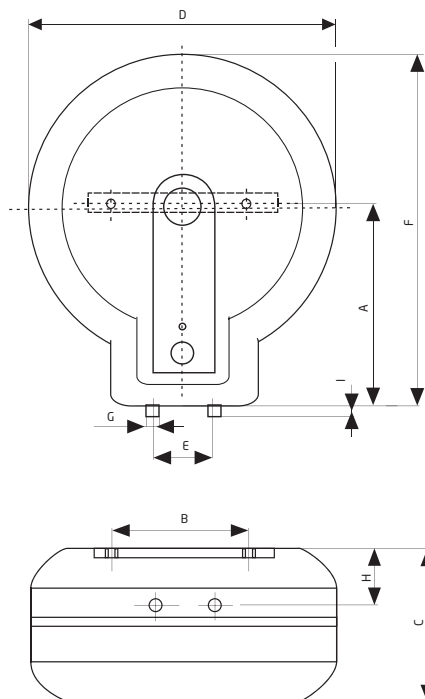
ELECTRIC STORAGE WATER HEATERS

TO 20

Wall-mounted, vertical

The design of the TO 20 permits:

- Hot water temperature settings between 7 and 77 °C
- Water temperature visual checking
- Overheating protection
- Anti freezing protection
- Water heating visual indicator
- Positioning of the heater directly above a bath with a protection level IP 45
- Very low heat loss
- For several consumption points (pressure WH)
- Fast heating of water (from 10 °C to 60 °C in 31 minutes)



Type	A	B	C	D	E	F	G	H	I
TO 20	335	180	246	500	100	581	½"	98	16

Type	TO 20
Volume [l]	20
Nominal overpressure [MPa]	0,6
Voltage [V/Hz]	1 PE-N~230/50
Heating period with ele. en. from 10 °C to 60 °C [min]	31
Weight [kg]	15
Vessel	enameled steel
Electrical protection	IP 45
Connected load [kW]	2,2
Heat loss [kWh/24h]/energy efficiency class	0,28/F

